

# KPMG South Africa structure

**KPMG Inc\***

**KPMG Services  
(Pty) Ltd \***

**Audit**

**Tax & Legal  
Advisory**

CA (SA)

All directors

Directors	259
Professional	2382
<u>Support</u>	<u>576</u>
<b>Total staff</b>	<b>3217<sup>^</sup></b>

\* Incorporated October 1999

<sup>^</sup> As of August 2011

# Policy Board



**Yunus  
Suleman  
(Chairman)**



**Moses  
Kgosana  
(CE)**



**Devon  
Duffield**



**Pierre  
Fourie**



**Tantie  
Fubu**



**Arvind  
Hari**



**Trevor  
Hoole**



**Ahmed  
Jaffer**



**Edson  
Magondo**



**John  
MacIntosh**



**Tshidi  
Mokgabudi**



**Tersia  
Rossouw**



**Carel  
Smit**



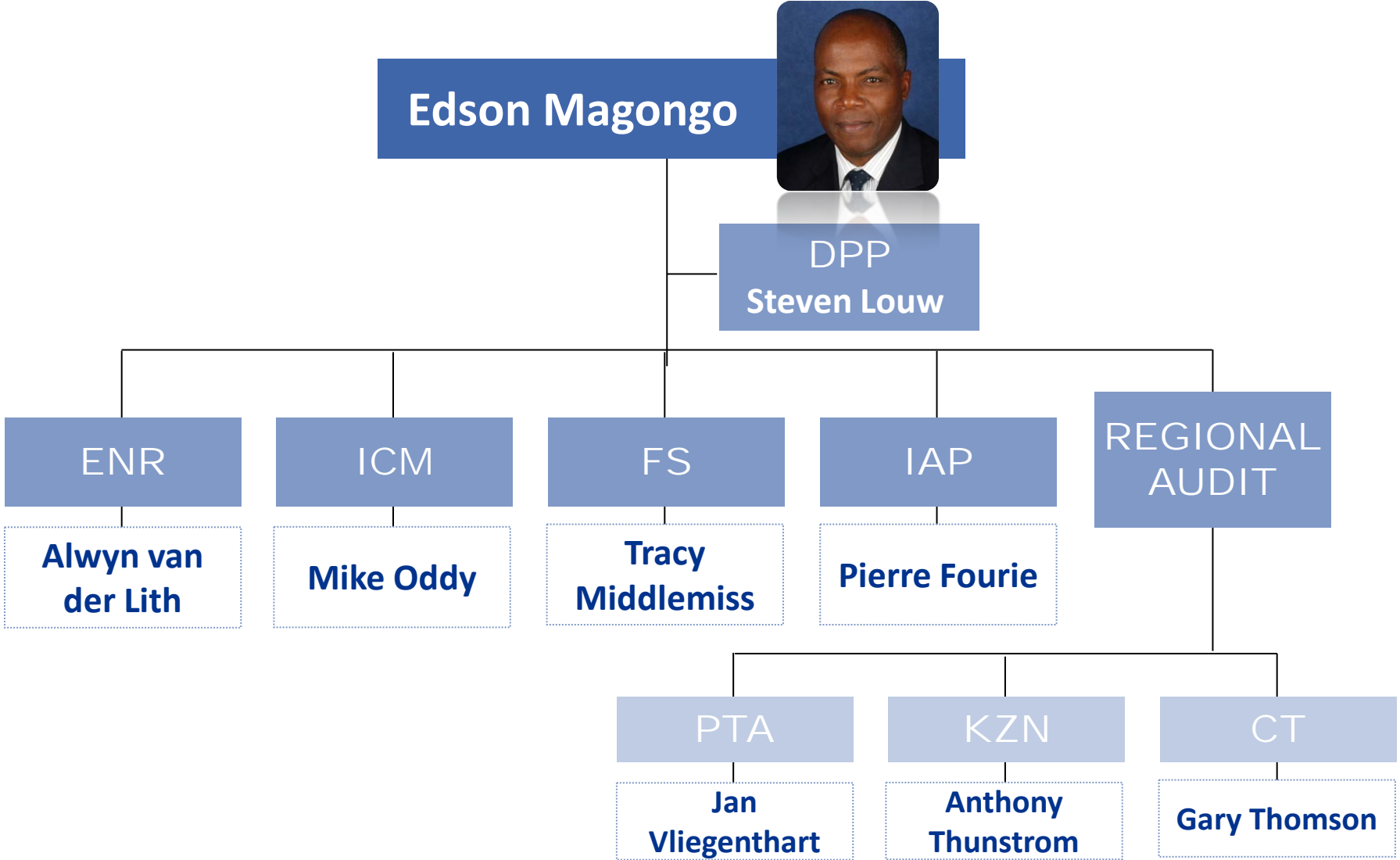
**Anthony  
Thunstrom**

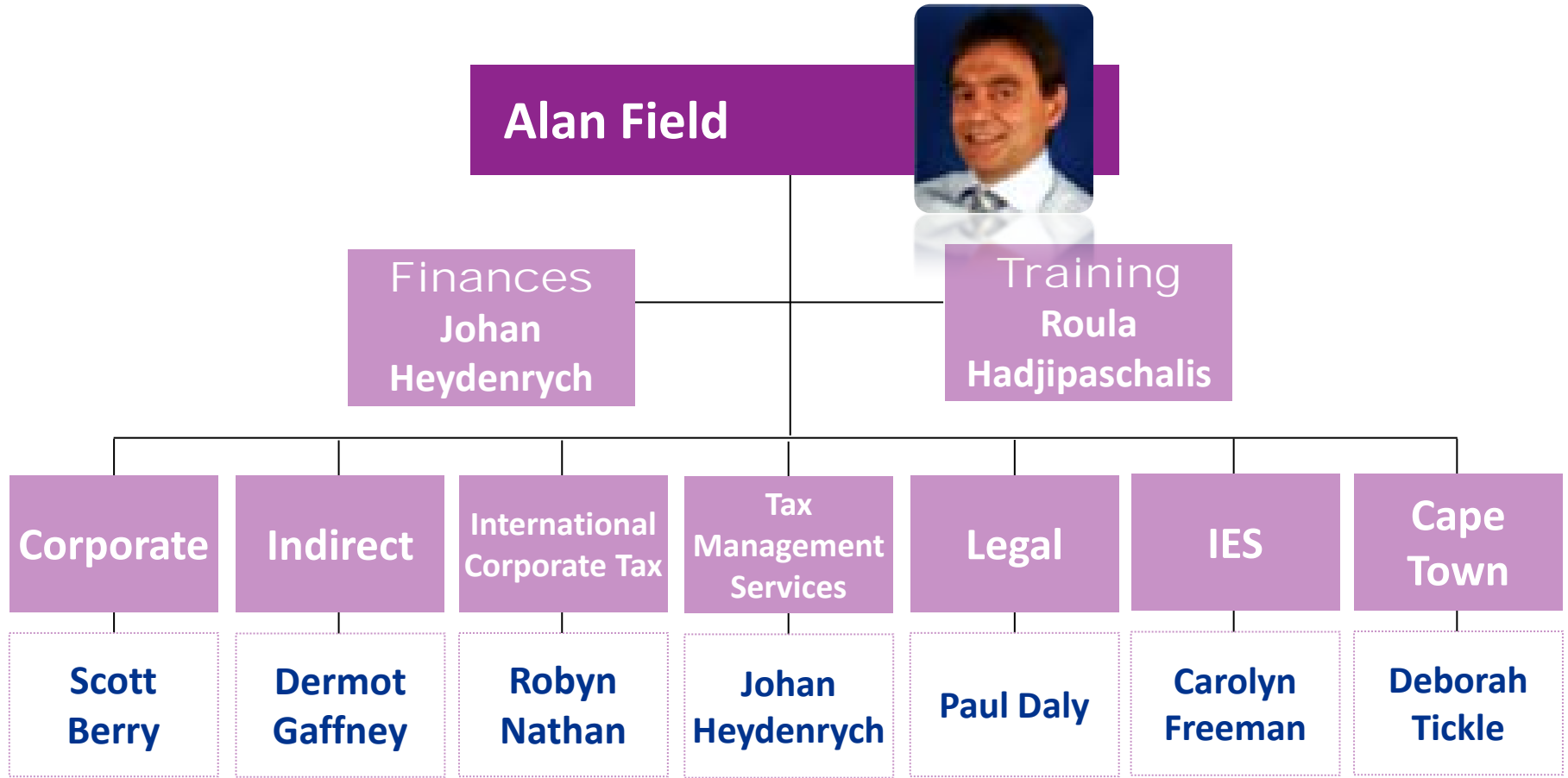


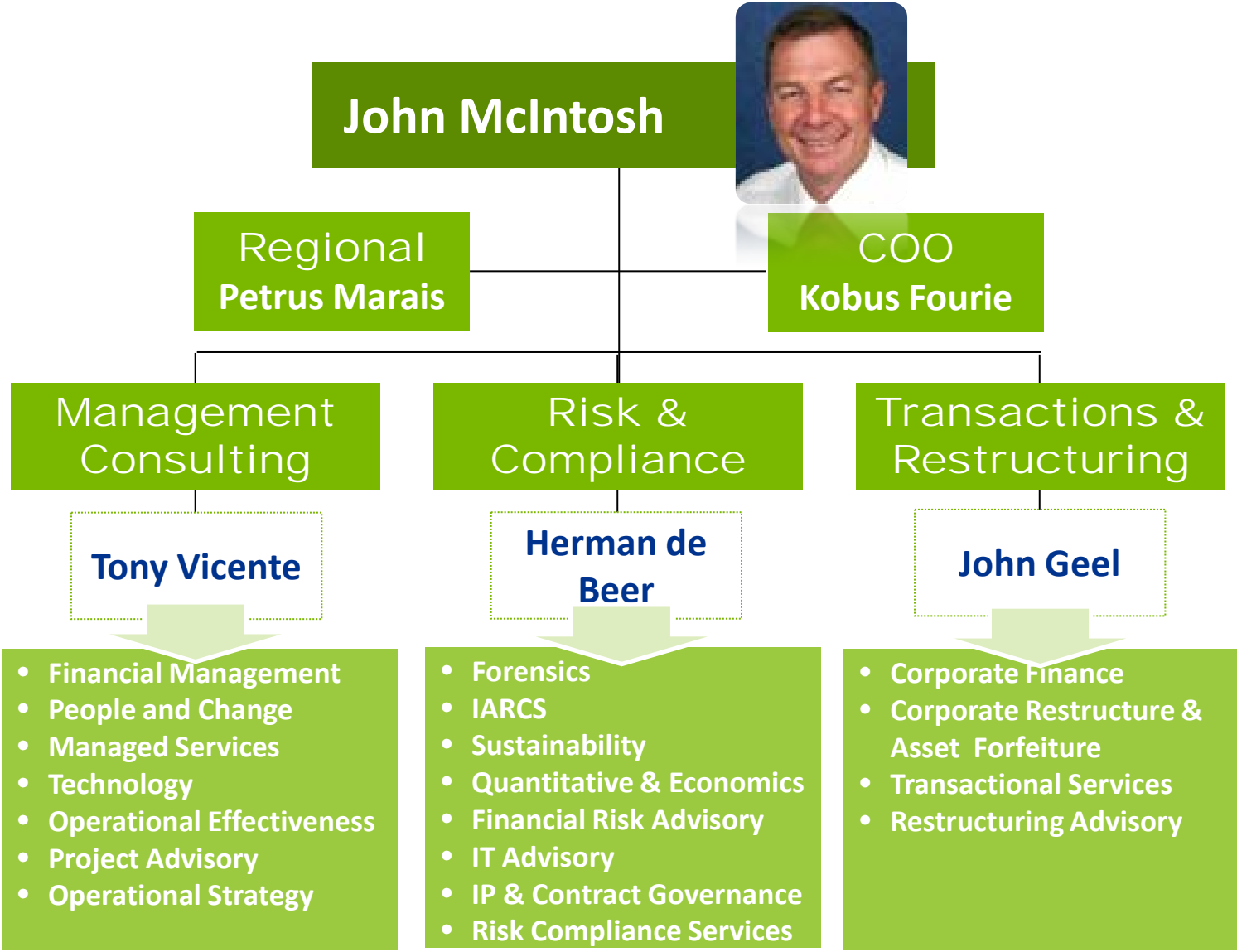
**Danie van  
Heerden**

# Executive Committee



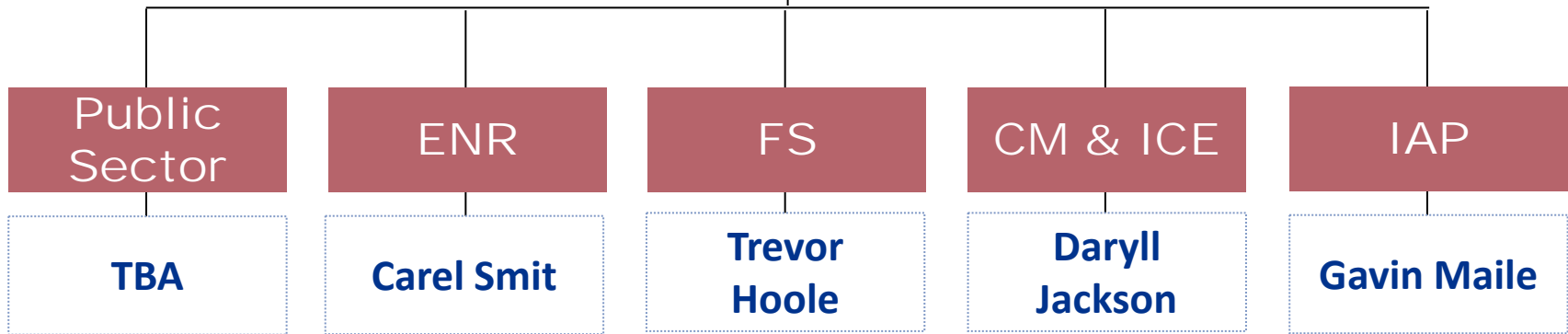








**Tshidi Mokgabudi**



# Support Services

